

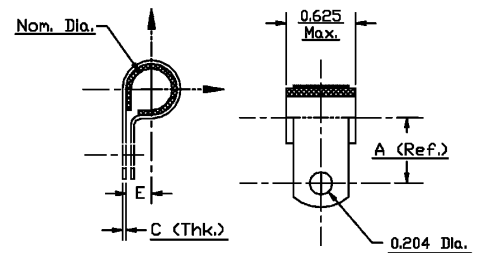


smiths

Titeflex X218 Stainless Steel Mesh Lined Clamp

Titeflex offers a patented loop clamp lined with a stainless steel mesh pad. The stainless steel mesh pad is spot welded to the clamp base. The finished assembly meets or exceeds all test requirements of MS21919.

This all stainless steel clamp is required for those applications where temperatures exceed the limitations of various cushion materials. X218 Series clamps withstand maximum temperatures of +1000°F (+537°C).



Titeflex X218 Stainless Steel Mesh Lined Clamp

| Part # | Nom. Dia. | A (Ref.) | C (Thk.) | E (Ref.) | Approx. Wt. (Lbs.) |
|----------|-----------|----------|----------|----------|--------------------|
| X218-3 | .188 | .498 | .031 | .094 | .010 |
| X218-4 | .250 | .529 | .031 | .125 | .012 |
| X218-5 | .312 | .560 | .031 | .156 | .013 |
| X218-6 | .375 | .592 | .031 | .188 | .015 |
| X218-7 | .438 | .623 | .031 | .219 | .016 |
| X218-8 | .500 | .654 | .031 | .250 | .017 |
| X218-9 | .563 | .752 | .031 | .281 | .028 |
| X218-10 | .625 | .780 | .031 | .312 | .030 |
| X218-11 | .688 | .811 | .031 | .344 | .032 |
| X218-12 | .750 | .842 | .051 | .375 | .034 |
| X218-13 | .812 | .858 | .051 | .406 | .037 |
| X218-14 | .875 | .889 | .051 | .438 | .039 |
| X218-15 | .938 | .920 | .051 | .469 | .041 |
| X218-16 | 1.000 | .951 | .051 | .500 | .043 |
| X218-21 | 1.312 | 1.156 | .064 | .625 | .045 |
| X218-24 | 1.500 | 1.250 | .064 | .719 | .050 |
| X218-26 | 1.625 | 1.312 | .064 | .781 | .054 |
| X218-104 | 1.546 | 1.273 | .064 | .742 | .052 |

engineering value in precision components