



LAND BASED & MARINE TURBINE



Aero-Hose, Corp. manufactures and supplies various low, medium and high pressure hose assemblies as well as rigid tubes in support of the land based and marine turbine markets for power generation. From standard fuels lines to complex hose/tube combinations, Aero-Hose, Corp. products are used in fuel, hydraulic, pneumatic and bleed air applications. With its aerospace pedigree, Aero-Hose, Corp. hose assemblies are the ideal solution to support critical power generation applications for power plants, warships, frigates in addition to various remote power needs.

R101 (130/180 SERIES):

A medium pressure aerospace hose assembly qualified to AS1946 and MIL-DTL-25579. The hose consists of an extruded smoothbore PTFE innercore, reinforced with CRES 304 wire braid in a single layer on sizes -03 - 12, and a double layer (Z) on sizes -16 - 24. Operating pressures range from 1500 PSI (104 Bar) in the small diameters to 1000 PSI (69 Bar) in the largest diameters. PTFE provides excellent chemical resistance over a temperature range of -65°F to +450°F (-54°C to +232°C) with an unlimited shelf life. Standard fittings are CRES (Class I) or aluminum (Class II). Fire protection per AS1055 Class A & B can be either integral (RM/RF), or slip-on AS1072 firesleeve. Chafe sleeves are available in a variety of integral or slip-on materials. Hybrid assemblies combining flex hose with multi-bend tube are a Titeflex specialty and provide improved vibration dampening, ease of installation, and maintenance over strictly rigid tube.

SERIES: 130/180

SPECIFICATION:

SAE AS1946

MIL-DTL-25579

MIL-DTL-27267

BRAID: CRES

INNERCORE: PTFE Smoothbore

QUALIFICATIONS:

SAE AS1946, MIL-DTL-25579,

MIL-DTL-27267, TSO C53A,

TSO C75, AS1055 Type IIa & IIb,

Class A & B, Integral and Slip-on

Firesleeve

ENGLISH

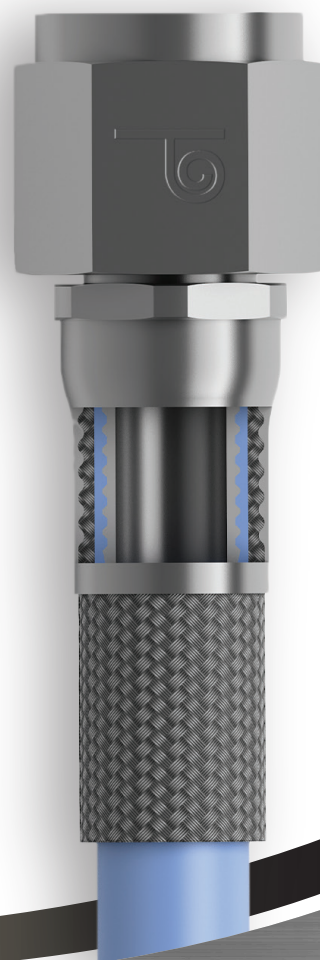
HOSE SIZE	OPERATING PRESSURE	HOSE ID (MIN)	HOSE OD (MIN)	HOSE OD (MAX)	BRAIDED HOSE WT/1'	BEND RADIUS (MIN)/2'	PROOF PRESSURE	NEGATIVE PRESSURE	ROOM TEMP BURST (MIN)	HIGH TEMP BURST (MIN)
	psi	in	in	in	lb/in	in	psi	in HG	psi	psi
3	1,500	0.11	0.234	0.285	0.005	2	3,000	28	12,000	7,000
4	1,500	0.173	0.304	0.374	0.007	2	3,000	28	12,000	7,000
5	1,500	0.235	0.367	0.417	0.008	2	3,000	28	10,000	6,500
6	1,500	0.298	0.43	0.5	0.01	4	3,000	28	9,000	6,500
8	1,500	0.391	0.546	0.614	0.013	4.63	3,000	28	8,000	6,000
10	1,500	0.485	0.641	0.799	0.017	5.5	3,000	28	7,000	5,500
12	1,000	0.615	0.766	0.906	0.027	6.5	2,000	20	5,000	3,500
16Z	1,250	0.851	1.078	1.14	0.048	7.38	2,500	14	5,000	3,500
20Z	1,000	1.101	1.328	1.39	0.062	11	2,000	10	4,000	3,000
24Z	1,000	1.344	1.637	1.707	0.084	14	2,000	8	4,000	3,000

NOTES /1/ Over minimum 12 inch length /2/ Inside of bend Sizes -03 to -05:180 Series

METRIC

HOSE SIZE	OPERATING PRESSURE	HOSE ID (MIN)	HOSE OD (MIN)	HOSE OD (MAX)	BRAIDED HOSE WT/1'	BEND RADIUS (MIN)/2'	PROOF PRESSURE	NEGATIVE PRESSURE	ROOM TEMP BURST (MIN)	HIGH TEMP BURST (MIN)
	bar	mm	mm	mm	g/m	mm	bar	mm Hg	bar	bar
3	103	2.79	5.9	7.2	89	51	207	711	827	483
4	103	4.8	7.7	8.7	125	51	207	711	827	483
5	103	5.97	9.3	10.3	143	51	207	711	689	448
6	103	7.87	11.2	11.91	179	102	207	711	621	448
8	103	9.93	13.9	14.86	232	117	207	711	552	414
10	103	12.32	16.3	17.45	304	140	207	711	483	379
12	69	15.62	19.5	20.62	482	165	138	508	345	241
16Z	86	21.62	27.4	28.96	857	185	172	356	345	241
20Z	69	27.97	33.7	35.31	1 107	279	138	254	276	207
24Z	69	34.14	41.6	43.36	1 500	356	138	203	276	207

NOTES /1/ Over minimum 12 inch length /2/ Inside of bend



1845 Town Center Blvd. #140, Orange Park, FL 32003
(904) 215 -9638 www.aero-hose.com

